



Jacqueline de Jonge BeColourful



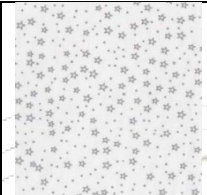
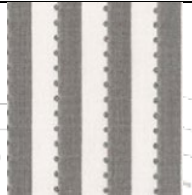

Enchanting Stars in the Blush Collection

Fabric 1: BCB1Q-X 1/3 yard	Fabric 2: BCB2Q-X 1/3 yard	Fabric 3: BCB3Q-X 1/3 yard	Fabric 4: BCB4Q-X 1/2 yard	Fabric 5: BCB5Q-X 1/2 yard	Fabric 6: BCB6Q-X 1/3 yard
Fabric 7: BCB7Q-X 1/2 yard	Fabric 8: BCB8Q-X 1/3 yard	Fabric 9: BCB9Q-X 1/3 yard	Fabric 10: BCB10Q-X 1/2 yard	Fabric 11: BCB11Q-X 1/3 yard	Fabric 12: BCB12Q-X 1/2 yard
Fabric 13: BCB13Q-X 1/3 yard	Fabric 14: BCB14Q-X 1/3 yard	Fabric 15: BCB15Q-X 1/3 yard	Fabric 16: BCB16Q-X 1/2 yard	Fabric 17: BCB17Q-X 1/3 yard	Fabric 18: BCB18Q-X 1/3 yard
Fabric 19: BCB19Q-X 1/2 yard	Fabric 20: BCB20Q-X 1/3 yard	Fabric 21: BCB21Q-X 1/3 yard	Fabric 22: BCB22Q-X 1/3 yard	Fabric 23: BCB23Q-X 1/2 yard	Fabric 24: BCB24Q-X 1/3 yard





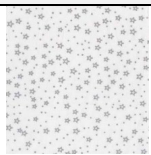
Jacqueline de Jonge BeColourful

					
Fabric 25: BCB31Q-2 1 yard	Fabric 26: BCB26Q-X 1¼ yard	Fabric 27: BCB27Q-2 1 yard	Fabric 28: BC28-1 Grey Stripe includes the binding ¾ yard	Fabric 29: 51394-43 Diamond Dust 1 yard	Fabric 30: 867Q-2 Backing Fabric: 3.5 yard

Fabric and Cutting instructions for the Blush version of Enchanting Stars

Part A6: Fabric for the base of the star

I have changed the white background fabric of star A6 from BC 33 the white, into BCB 27Q-2: the white with silver stars



BCB 27Q-2

Fabric 27: Follow the cutting instructions in the booklet.



Part A2: The 3/4 circle

I have changed the background fabric of A2 from BC 35 the black Diamond Dust, into 51394-43: the Diamond Dust Snow



51394-43

Fabric 29: Follow the cutting instructions in the booklet.

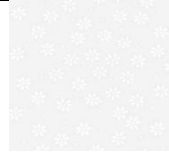




Jacqueline de Jonge BeColourful

Part A5: Background part

I have changed the background fabric of A5 from BC 25 the solid black into BCB 26Q-X, the Ditzzy Daisy white

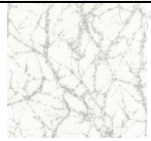


BCB 26Q-X

Fabric 26: Follow the cutting instructions in the booklet.

Part A7-a: The outside border

I have changed the Outside Border of A7a from BC 35 the black Diamond Dust, into 51394-43: Diamond Dust Snow
I also changed the black and white striped fabric from BC28 into the grey and white stripe: BC 28-1



51394-43

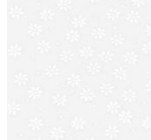


BC28-1

Fabric 29: Diamond Dust Snow. Follow the cutting instructions in the booklet.
Fabric 28: Grey and white stripe: follow the cutting instructions in the booklet.

Part A7-b and A7-c: Background parts

I have changed the background fabrics of A7-b and A7-c from BC 25 the solid black into BCB 26Q-X, the Ditzzy Daisy white



BCB 26Q-X

Fabric 26: Follow the cutting instructions in the booklet.

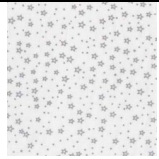




Jacqueline de Jonge BeColourful

Part B10: Fabric for the base of the star

I have changed the white background fabric of star B10 from BC 33 the white, into BCB 27Q-2: the white with silver stars
Use the remaining strip of fabric BCB 27Q-2 in star C21.



BCB 27Q-2

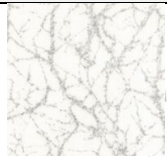
Fabric 27: Follow the cutting instructions in the booklet.

We use the leftover strip in star C21.

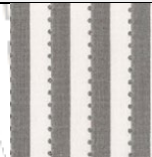
Part C12: Fabric for the base of the star points 1, 2, 3 & 4

I have changed the black Diamond Dust fabric: BC 35 which is the background fabric of star points 1, 2, 3 & 4 of C12 into 51394-43 the Diamond Dust Snow.

I also changed for the star points 1 and 4 of C12 the black and white striped fabric from BC28 into the grey and white stripe: BC 28-1.



51394-43



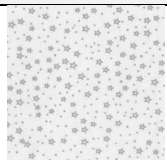
BC28-1

Fabric 29: Diamond Dust Snow: follow the instructions in the booklet.

Fabric 28: Grey and white stripe: follow the cutting instructions in the booklet.

Part C12: Fabric for the base of the star points 5, 6, 7 & 8

I have changed the white background fabric of star B12 from BC 33 the white, into BCB 27Q-2: the white with silver stars



BCB 27Q-2

Fabric 27: Follow the instructions in the booklet.

We use the leftover strip in star E32.





Jacqueline de Jonge BeColourful

Part C21: Fabric for the base of the 8 star points of C21

I have changed the white background fabric of star C21 from BC 33 the white, into BCB 27Q-2: the white with silver stars



BCB 27Q-2

Fabric 27: Follow the instructions in the booklet.

Use the leftover strip of star B10 and cut 8 pieces of 2½" x 2½".

Part C13: Background arch

I have changed the background fabric of Arch C13 from BC31 the Becolourful black into BCB 31Q-2 Becolourful white



BCB 31Q-2

Fabric 25: Follow the cutting instructions in the booklet.

Part C15: Background arch

I have changed the background fabric of part C15 from BC35 the Diamond black into 51394-43 Diamond Dust Snow.

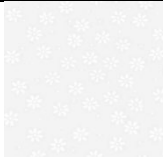


51394-43

Fabric 29: Follow the cutting instructions in the booklet.

Part C17: Background part

I have changed the background fabric of C17 from BC 25 the solid black into BCB 26Q-X, the Ditzzy Daisy white



BCB 26Q-X

Fabric 26: Follow the cutting instructions in the booklet.





Jacqueline de Jonge BeColourful

Part C19: Background part

I have changed the background fabric of part C19 from BC31 the Becolourful black into BCB 31Q-2 Becolourful white



BCB 31Q-2

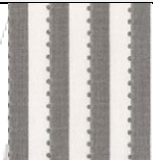
Fabric 25: Follow the cutting instructions in the booklet.

Part C20 & C24: Outside Borders

I have changed the Outside Border fabric of parts C20 & C24 from BC35 the Diamond black into 51394-43 the Diamond Dust Snow. I also changed BC 28, the black and white stripe into BC 28-1 the grey with white stripe.



51394-43



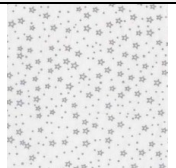
BC 28-1

Fabric 29: Diamond Dust Snow: follow the instructions in the booklet.

Fabric 28: Grey and white stripe: follow the cutting instructions in the booklet.

Part D28: Fabric for the base of the 8 star points

I have changed the white background fabric of star D28 from BC 33 the white, into BCB 27Q-2: the white with silver stars
Use the remaining strip of fabric BCB 27Q-2 in star D31.



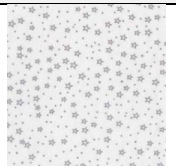
BCB 27Q-2

Fabric 27: Follow the instructions in the booklet.

Use the leftover strip of BCB27Q-2 in star D31.

Part D31: Fabric for the base of the 8 star points

I have changed the white background fabric of star D31 from BC 33 the white, into BCB 27Q-2: the white with silver stars



BCB 27Q-2

Fabric 27: Follow the instructions in the booklet.

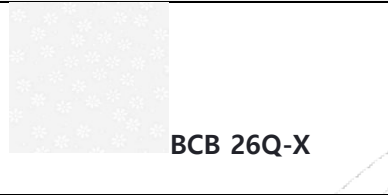




Jacqueline de Jonge BeColourful

Part D25: Background part

I have changed the background fabric of D25 from BC 25 the solid black into BCB 26Q-X, the Ditzzy Daisy white



BCB 26Q-X

Fabric 26: Follow the cutting instructions in the booklet.

Part D26: Background part

I have changed the background fabric of D26 from BC 25 the solid black into BCB 26Q-X, the Ditzzy Daisy white

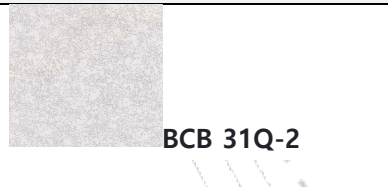


BCB 26Q-X

Fabric 26: Follow the cutting instructions in the booklet.

Part D29: Large Center Circle

I have changed the fabric for the large Center Circle of part D29 from BC31 the Becolourful black into BCB 31Q-2 Becolourful white

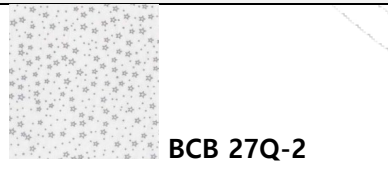


BCB 31Q-2

Fabric 25: Follow the cutting instructions in the booklet.

Part E32: Fabric for the base of the star points 1, 2, 3 & 4

I have changed the white background fabric of star E32 from BC 33 the white, into BCB 27Q-2: the white with silver stars



BCB 27Q-2

Fabric 27: Foundation point 1: Use the remaining fabric strip of BCB 27Q-2 of star C12. Follow the instructions in the booklet.





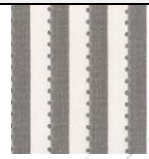
Jacqueline de Jonge BeColourful

Part E33: Fabric for the base of the star points 5, 6, 7 & 8

I have changed the black Diamond Dust fabric: BC 35 which is the background fabric of star points 5, 6, 7 & 8 of E33 into 51394-43 the Diamond Dust Snow. I also changed for the star points 5 and 8 of E33 the black and white striped fabric from BC28 into the grey and white stripe: BC 28-1.



51394-43



BC28-1

Fabric 29: foundation point 1: star points 5, 6, 7 & 8: Diamond Dust Snow. Follow the instructions in the booklet.

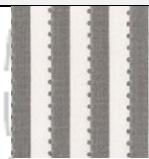
Fabric 28: foundation point 2: star points 5 & 8: Grey and white stripe. Follow the cutting instructions in the booklet.

Part E33-1: Outside Border

I have changed the Outside Border fabric of part E33-1 from BC35 the Diamond black into 51394-43 the Diamond Dust Snow. I also changed BC 28, the black and white stripe into BC 28-1 the grey with white stripe.



51394-43



BC 28-1

Fabric 29: Diamond Dust Snow: follow the instructions in the booklet.

Fabric 28: Grey and white stripe: follow the cutting instructions in the booklet.

Part E34: Large Arch

I have changed the fabric for the large Arch of part E34 from BC31 the Becolourful black into BCB 31Q-2 Becolourful White.



BCB 31Q-2

Fabric 25: Follow the cutting instructions in the booklet.

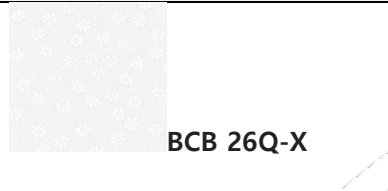




Jacqueline de Jonge BeColourful

Part E37: Background part

I have changed the background fabric of E37 from BC 25 the solid black into BCB 26Q-X, the Ditzzy Daisy white

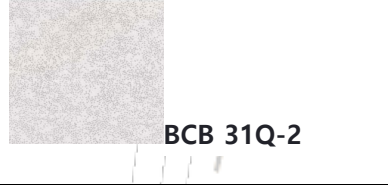


BCB 26Q-X

Fabric 26: Follow the cutting instructions in the booklet.

Part E37-2: half circle

I have changed the fabric for the half circle of part E37-2 from BC31 the Becolourful black into BCB 31Q-2 Becolourful White.

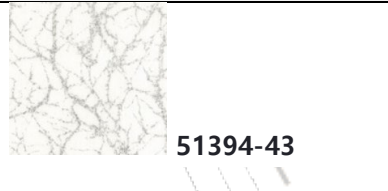


BCB 31Q-2

Fabric 25: Follow the cutting instructions in the booklet.

Part E39: Background arch

I have changed the background fabric of E39 from BC35 the Diamond black into 51394-43 the Diamond Dust Snow.



51394-43

Fabric 29: Follow the cutting instructions in the booklet.

Part E40: Background part

I have changed the background fabric of E40 from BC 25 the solid black into BCB 26Q-X, the Ditzzy Daisy white



BCB 26Q-X

Fabric 26: Follow the cutting instructions in the booklet.

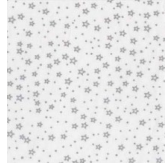




Jacqueline de Jonge BeColourful

Part G45: Fabric for the base of the star points 1, 2, 3 & 4

I have changed the white background fabric of star G45 from BC 33 the white, into BCB 27Q-2: the white with silver stars
Use the leftover fabric strip in star: H54.



BCB 27Q-2

Fabric 27: Foundation point 1: Follow the instructions in the booklet.
Use the leftover fabric strip in star: H54.

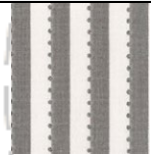
Part G45: Fabric for the base of the star points 5, 6, 7 & 8

I have changed the black Diamond Dust fabric: BC 35 which is the background fabric of star points 5, 6, 7 & 8 of G45 into the Diamond Dust Snow.

I also changed for the star points 5 and 8 of G45 the black and white striped fabric from BC28 into the grey and white stripe: BC 28-1.



51394-43



BC28-1

Fabric 29: foundation point 1: star points 5, 6, 7 & 8: Diamond Dust Snow.

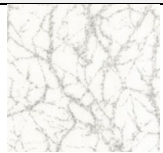
Follow the instructions in the booklet.

Fabric 28: foundation point 2: star points 5 & 8 of G45: Grey and white stripe.

Follow the cutting instructions in the booklet.

Part G44: Background arch

I have changed the background fabric of part G44 from BC35 the Diamond black into 51394-43 the Diamond Dust Snow.



51394-43

Fabric 29: Follow the cutting instructions in the booklet.


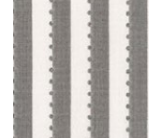




Jacqueline de Jonge BeColourful


Part G46 & G47: Outside Borders

I have changed the Outside Border fabric of parts G46 & G47 from BC35 the Diamond black into 51394-43 the Diamond Dust Snow. I also changed BC 28, the black and white stripe into BC 28-1 the grey with white stripe.

 51394-43	 BC 28-1	<p>G46 Fabric 29: Diamond Dust Snow: follow the instructions in the booklet. Fabric 28: Grey and white stripe: follow the cutting instructions in the booklet.</p> <p>G47 Fabric 29: Diamond Dust Snow: follow the instructions in the booklet. Fabric 28: Grey and white stripe: follow the cutting instructions in the booklet.</p>
---	---	---


Part H54: Fabric for the base of the star points

I have changed the white background fabric of star H54 from BC 33 the white, into BCB 27Q-2: the white with silver stars

 BCB 27Q-2	<p>Fabric 27: Use the leftover strip of star G45. Follow the instructions in the booklet.</p>
---	--

Part H49: Background part

I have changed the background fabric of H49 from BC 25 the solid black into BCB 26Q-X, the Ditzzy Daisy white

 BCB 26Q-X	<p>Fabric 26: Follow the cutting instructions in the booklet.</p>
--	--


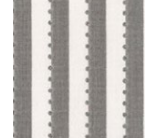




Jacqueline de Jonge BeColourful


Part H50, H51 & H52: Outside Borders

I have changed the Outside Border fabric of parts H50, H51 & H52 from BC35 the Diamond black into 51394-43 the Diamond Dust Snow. I also changed BC 28, the black and white stripe into BC 28-1 the grey with white stripe.

 51394-43	 BC 28-1	<p>H50 Fabric 29: Diamond Dust Snow: follow the instructions in the booklet. Fabric 28: Grey and white stripe: follow the cutting instructions in the booklet.</p> <p>H51 Fabric 29: Diamond Dust Snow: follow the instructions in booklet. Fabric 28: Grey and white stripe: follow the cutting instructions the in the booklet.</p> <p>H52 Fabric 29: Diamond Dust Snow: follow the instructions in the booklet. Fabric 28: Grey and white stripe: follow the cutting instructions in the booklet</p>
---	---	--

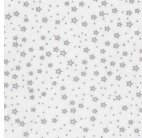
Part H55: Background part

I have changed the background fabric of H55 from BC 25 the solid black into BCB 26Q-X, the Ditzzy Daisy white

 BCB 26Q-X	<p>Fabric 26: Follow the cutting instructions in the booklet.</p>
--	--

Part J59: Fabric for the base of the 8 star points

I have changed the white background fabric of star J59 from BC 33 the white, into BCB 27Q-2: the white with silver stars

 BCB 27Q-2	<p>Fabric 27: Follow the instructions in the booklet.</p>
--	--

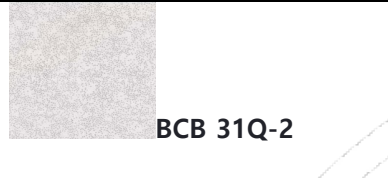




Jacqueline de Jonge BeColourful

Part J57: 3/4 circle

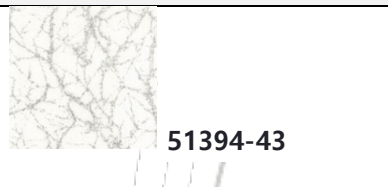
I have changed the fabric for the 3/4 circle of part J57 from BC31 the Becolourful black into BCB 31Q-2 Becolourful White.



Fabric 25: Follow the cutting instructions in the booklet.

Part J58: circle

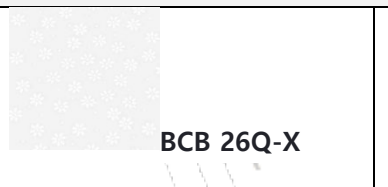
I have changed the circle of fabric BC35 of part J58, the Diamond black into 51394-43 the Diamond Dust Snow.



Fabric 29: Follow the cutting instructions in the booklet.

Part J60: Background corner part

I have changed the background fabric of J60 from BC 25 the solid black into BCB 26Q-X, the Ditzzy Daisy white



Fabric 26: Follow the cutting instructions in the booklet.

Parts J62 & J63: Outside Borders

I have changed the Outside Border fabric of parts H50, H51 & H52 from BC35 the Diamond black into 51394-43 the Diamond Dust Snow. I also changed BC 28, the black and white stripe into BC 28-1 the grey with white stripe.



J62

Fabric 29: Diamond Dust Snow: follow the instructions in the booklet.

Fabric 28: Grey and white stripe: follow the cutting instructions in the booklet.

J63

Fabric 29: Diamond Dust Snow: follow the instructions in the booklet.

Fabric 28: Grey and white stripe: follow the cutting instructions in the booklet.

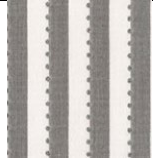




Jacqueline de Jonge BeColourful

The Binding

I have changed the Binding fabric from BC 25 the solid black into BC28-1 the grey with white stripe



BCB 26Q-X

Fabric 28: Follow the cutting instructions in the booklet.

For the binding cut 6 strips of 2½" x WOF

